

# DEWALT®

## ⚡ ELECTRICAL™



**INNOVATION** FOR THE **TRADES**™

# DEWALT®

## END TO END SOLUTIONS FOR ELECTRICIANS

From design to build to report,  
DEWALT delivers what electricians need to  
get the job done - from start to finish.

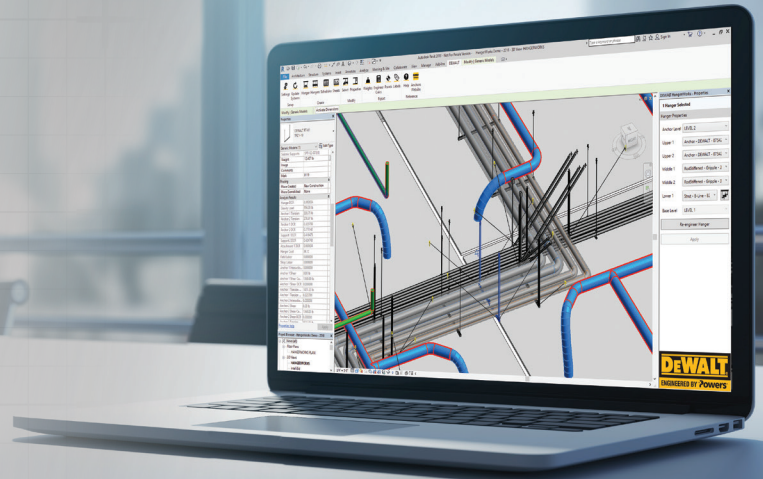


LOOK FOR THIS  
LOGO ON SPECIALLY  
MARKED PRODUCTS

DEWALT's PERFORM & PROTECT™ line of power tools is designed to provide a high level of one or more of the following: dust containment, control, or low vibration, without sacrificing performance. Many DEWALT electrical tools meet our high PERFORM & PROTECT™ standards.



# AUTOMATE PLACEMENT & DESIGN OF MEP HANGERS



**DEWALT Hangerworks™ plug-in for Autodesk® Revit®** is a tool that automates the placement and design of hangers and seismic bracing for duct, conduit, and cable tray systems.

Contractors can expect to achieve significant BIM workflow efficiencies and cost savings.

Complex engineering calculations are built-in to the tool that enable it to size hanger assemblies based on the weights of the MEP system including contents (water, wire, air).

The software will determine hanger locations based on building code requirements and user-defined project standards.

Autodesk® and Revit® are registered trademarks of Autodesk, Inc.



## DEWALT CAST-IN-PLACE ANCHORS

When you proactively plan your anchor layout, Cast-In-Place Anchors can be installed prior to concrete being placed.

**PFM2511110**  
DDI+™ for metal deck assemblies



**PFM252130**  
WOOD-KNOCKER II+  
for Wooden Forms



**7543-PWR**  
BANG-IT® for  
Composite Steel Deck

For additional information, contact:

**DWGTP@GOGTP.COM | (303) 547-2525**



# DRILL

## HIGH PERFORMANCE. HIGH PROTECTION.

DeWALT offers many OSHA Table 1 compliant kits and shrouds for drilling post-installed concrete anchors, which reduce the exposure to harmful silica dust.



### DCH273P2DHO | 1" L-SHAPE SDS+ ROTARY HAMMER KIT WITH ONBOARD DUST EXTRACTOR

No Load Speed	0-1,100 RPM
BPM	0-4,600 BPM
Optimum Drilling Range	3/16" - 1/2" (4.8 mm - 12.7 mm)
Impact Energy	2.1 Joules
Tool Weight	5.4 lbs (2.4 kg)

- OSHA TABLE 1 COMPLIANT SOLUTION
- BRUSHLESS MOTOR AND EXTENDED RUN TIME PACKS

#### INCLUDES

DCH273 1" (26 mm) SDS Rotary Hammer, (2) DCB205 20V MAX\* XR® Premium Lithium Ion Batteries (5.0 Ah), Charger, 360° Side Handle, Depth Rod, Adjustable Utility Hook, DWH303DH Dust Extractor with OSHA Table 1 Compliant Filter Cleaning HEPA Filter and kit box.



### DCH293R2DH | 1-1/8" L-SHAPE SDS+ ROTARY HAMMER KIT WITH ONBOARD DUST EXTRACTOR

No Load Speed	0-1,000 RPM
BPM	0-4,480 BPM
Optimum Drilling Range	3/16" - 1/2" (4.8 mm - 12.7 mm)
Impact Energy	3.5 Joules
Tool Weight	8.21 lbs (3.72 kg)

- OSHA TABLE 1 COMPLIANT SOLUTION
- BRUSHLESS MOTOR AND EXTENDED RUN TIME PACKS

#### INCLUDES

DCH293R2 1-1/8" (28 mm) SDS+ Rotary Hammer, (2) DCB205 20V MAX\* XR® Premium Lithium Ion Batteries (6.0 Ah), Fast Charger, 360° Side Handle, Depth Rod, Adjustable Utility Hook, DWH304DH Dust Extractor with OSHA Table 1 Compliant Filter Cleaning HEPA Filter and kit box.

**OSHA COMPLIANT**  
1926.1153

#### OSHA COMPLIANT SOLUTIONS



**DCH273P2**  
20V MAX\* Brushless XR®  
1" L-SHAPE SDS+ Rotary  
Hammer Kit



**DWH303DH**  
Dust Extraction  
Filter Assembly



**DCH293R2**  
20V MAX\* Brushless XR®  
1-1/8" L-SHAPE SDS+  
Rotary Hammer Kit w/  
6.0 AH Battery

OR



**DCH293X2**  
20V MAX\* Brushless XR®  
1-1/8" L-SHAPE SDS+  
Rotary Hammer Kit w/  
9.0 AH Battery



**DWH304DH**  
Dust Extraction  
Filter Assembly

#### BARE HAMMERS



**DCH273B**



**DCH293B**

#### REPLACEMENT FILTER



**DWH302DH**  
Dust Extraction  
Filter Assembly

# ENGINEERED AND TESTED FOR ROCK-SOLID PERFORMANCE.

DeWALT's Post Installed anchors are used when you need to hang conduit or cable trays once the concrete is placed.

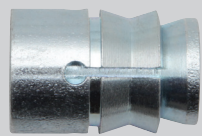
WORK WITH HANGERWORKS™ PLUG-IN FOR REVIT®



## PFM2211200 | Hangermate®+ ROD HANGING ANCHORS FOR CONCRETE

Rod Diameter	3/8"
Anchor Size	3/8 x 2-1/2"
Approved Embedments	1-5/8 x 2-1/2"
Drill Diameter	1/4"

- **THREAD PROFILE** for low torque, fast installation, full concrete engagement
- **HARDENED STEEL** installs in hard concrete and remains ductile
- **THREADED ROD** available in 1/4" or 3/8" rod sizes



## PFM2111820 | Mini-Undercut+™ INTERNALLY THREADED UNDERCUT ANCHOR

Rod Diameter	3/8"
Anchor Size	3/8 x 3/4"
Anchor Length	3/4"
Drill Diameter	5/8"

- **ICC-ESR 3912 CODE APPROVED** 3/4" long seismic anchor
- **PATENT PENDING GEOMETRY** design bites into concrete for undercut
- **THREADED SLEEVE** provides full thread engagement

### OVERHEAD ANCHOR INSTALLATION



### POST TENSION CABLE



## OTHER POST INSTALLED ANCHORS



**6403SD**  
SNAKE+® Internally Threaded  
Screw Anchor



**PFM1421050**  
Hangermate®+ For Concrete Externally  
Threaded - 1/4" x 2-1/2" x 3/8"



**6306SD**  
SMART Drop-In Internally Threaded  
Expansion Anchor



**PFM1411460**  
SCREW-BOLT+™  
High Performance Screw Anchor



# CUT

## DESIGNED TO **CUT THREADED ROD. AND TIME.**

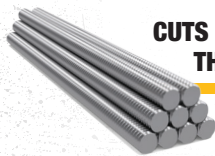
DeWALT has optimized how you cut material, like the game-changing Threaded Rod Cutter that takes the exposed blade out of your hand.



**PERFORM  
PROTECT**

**CONTROL**

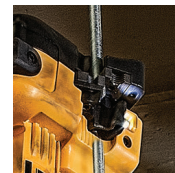
✓  
✓  
✓  
**NO CHIPS  
NO SPARKS  
NO BURRS**



**CUTS 1/4", 3/8", 1/2"  
THREADED ROD**



**INTEGRATED  
LED LIGHT**



**NO FAST  
MOVING BLADES**

**20V  
MAX  
LITHIUM ION**

### DCS350 | THREADED ROD CUTTER

<b>Cuts/Charge</b>	350 on 3/8" threaded rod (using DCB203 battery)			
<b>Capacity :</b>		Mild Steel	Stainless Steel	Hardened Steel
	1/4" - 20	✓	✓	✓
	3/8" - 16	✓	✓	✓
	1/2" - 13	✓		

- **DESIGNED FOR CHIP AND SPARK FREE CUTTING OF THREADED ROD**
- **CLEAN, BURR FREE CUTS** allows for easy threading
- **ROTATING CUTTING DIE** allows cutting of multiple sizes of rod with one set of cutting dies
- **ERGONOMICALLY DESIGNED HANDLE AND GRIP** make it convenient for overhead cutting

#### KIT OPTIONS



**DCS350B**  
Tool Only



**DCS350D1**  
DCS350 Threaded Rod Cutter, (1) DCB203 20V MAX\* Lithium Ion Battery (2.0 Ah), 12V/20V MAX\* Charger, (2) 4-Sided Cutting Dies, Die Adjustment Wrench, Kit Bag

#### REPLACEMENT DIES



**DCS3501**  
1/4", 3/8", 1/2"  
DIES



**DCS35038**  
3/8" DIES



**DCS35012**  
1/2" DIES

# SOLUTIONS FOR MANY CABLE TYPES

Part of the ever-growing 20V MAX\* system, our cable cutters are reliable and versatile tools to cut copper, aluminum and ACSR cable.



**FOR COPPER AND ALUMINUM CABLE**

**CUTS UP TO  
750 MCM Cu**

**1000 MCM Al**

**DO NOT USE TO CUT STEEL**



**FOR ACSR, COPPER AND ALUMINUM CABLE**

**CUTS UP TO  
1590 ACSR**

**1000 MCM Al**

**750 MCM Cu**



## DCE150 | CABLE CUTTING TOOL

- **BRIGHT LED LIGHT** to help illuminate cutting area
- **EASILY SERVICE OR REPLACE BLADE IN THE FIELD**, without going to a Service Center
- **GUILLOTINE STYLE CUTTING BLADE** maintains cable profile for easy connector installation

### KIT OPTIONS



**DCE150D1**  
DCE150 Cable Cutter, (1)  
DCB203 20V MAX\* Lithium Ion Battery (2.0 Ah), Charger, Hang Hook, Shoulder Strap, and Kit Box.

### REPLACEMENT BLADE



**DCE1501**  
Cable Cutting Tool Replacement Blade



## DCE155 | ACSR CABLE CUTTING TOOL

- **DESIGNED FOR CUTTING ACSR** (Aluminum Cable Steel Reinforced)
- **BRIGHT LED LIGHT** to help illuminate cutting area
- **EASILY SERVICE OR REPLACE BLADE IN THE FIELD**, without going to a Service Center
- **INCLUDED HANG HOOK** for convenience
- **GUILLOTINE STYLE CUTTING BLADE** maintains cable profile for easy connector installation

### KIT OPTIONS



**DCE155D1**  
DCE155 ACSR Cable Cutter, (1)  
DCB203 20V MAX\* Lithium Ion Battery (2.0 Ah), Charger, Hang Hook, Shoulder Strap, and Kit Box.

### REPLACEMENT BLADE



**DCE1551**  
ACSR Cable Cutting Tool Replacement Blade

### OTHER CUTTING TOOLS



**DCS367**  
20V MAX\* XR®  
BRUSHLESS COMPACT  
RECIPROCATING SAW



**DCS371**  
20V MAX\* BANDSAW



**DCS380**  
20V MAX\*  
RECIPROCATING SAW

### RELATED HAND TOOLS



**DWHT70275**  
COMPOUND ACTION  
DIAGONAL PLIERS



**DWHT70276**  
COMPOUND ACTION  
LINESMAN PLIERS

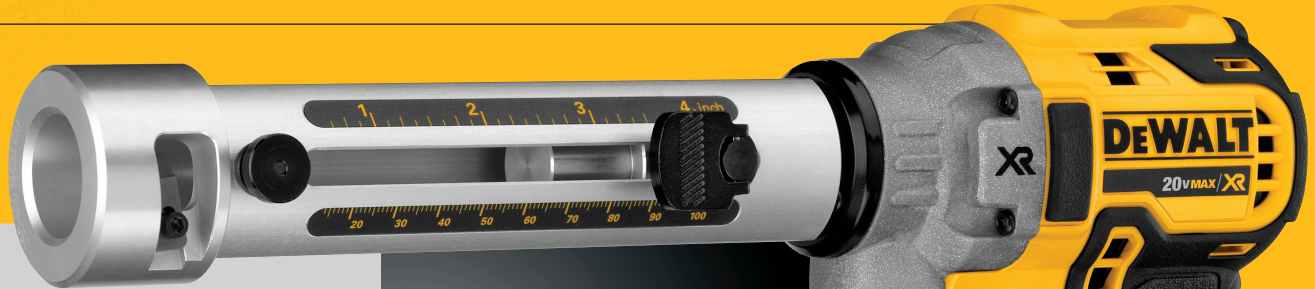


**DWHT70277**  
COMPOUND ACTION  
LONG NOSE PLIERS



# STRIP

## PUT DOWN THE KNIFE. PICK UP A BETTER SOLUTION.



### INTRODUCING

### DCE151 20V MAX\* XR® BRUSHLESS CABLE STRIPPER



## CLEAN & FAST JACKET REMOVAL



Range for THHN/ XHHW CU	#6 AWG to 750 MCM
Range for THHN/ XHHW AL	#6 AWG to 900 MCM
Depth of Strip	Up to 4" (10 cm)
Adjustable LED Light	Yes
Tool Weight	2.4 lbs ( 1.11 kg)

- **ADJUSTABLE DEPTH GAUGE** consistently strips cable up to 4"
- **E-CLUTCH® SYSTEM** helps the user maintain control of the tool if it becomes jammed
- **VARIABLE SPEED TRIGGER** up to 150 RPM for added speed control to help prevent damage to cable



#### KIT OPTIONS



**DCE151B**  
Tool Only



**DCE151TD1**  
DCE151 Cable Stripper,  
(1) DCB203 20V MAX\* XR®  
Lithium Ion Battery (2.0 Ah),  
(20) Bushings, Charger, Belt Clip  
and Kit Box.

### CABLE STRIPPER BUSHINGS

#### INCLUDED WITH DCE151TD1

CATALOG	CABLE SIZE	BUSHING	CATALOG	CABLE SIZE	BUSHING
DCE1513	1/0-2/0 CU, 2/0 AL	B3	DCE15112	350 MCM CU, 400 MCM AL	B12
DCE1514	2/0 CU, 3/0 AL	B4	DCE15114	350-400 MCM CU	B14
DCE1515	3/0 CU	B5	DCE15115	500 MCM AL	B15
DCE1516	3/0 CU, 4/0 AL	B6	DCE15116	500 MCM CU	B16
DCE1517	4/0 CU	B7	DCE15117	500 MCM CU, 600 MCM AL	B17
DCE1518	4/0-250 MCM CU, 250 MCM AL	B8	DCE15118	500-600 MCM CU, 600 MCM AL	B18
DCE1519	250 MCM CU, 300 MCM AL	B9	DCE15119	600 MCM CU	B19
DCE15110	250-300 MCM CU, 300 MCM AL	B10	DCE15120	600 MCM CU, 700 MCM AL	B20
DCE15111	300 MCM CU, 350 MCM AL	B11	DCE15121	600-700 MCM CU, 750 MCM AL	B21
			DCE15122	700 MCM CU	B22

#### SOLD SEPARATELY

CATALOG	CABLE SIZE	BUSHING
DCE1511	1 AWG CU, 1/0 AL	B1
DCE1512	1/0 CU	B2
DCE15123	700-750 MCM CU, 900 MCM AL	B23
DCE15124	750 MCM CU, 900 MCM AL	B24

#6 AWG - 1/0 sizes, use Ripley and Greenlee bushings

AL= Aluminum CU= Copper

Quickly and easily strip cable without the need for a knife.



Strips cleanly and to a consistent depth every time.



## DCE151 CABLE STRIPPER

- ✓ Control Speed
- ✓ Control Depth
- ✓ No Damage to Cable
- ✓ Helps Reduce Fatigue
- ✓ Fast and Easy to Use

### MANUAL TOOLS

- ✗ Strenuous on user
- ✗ Time-consuming
- ✗ Can't set a repeatable depth of cut

### TOOL ACCESSORIES

- ✗ Less control
- ✗ Break easily
- ✗ Can damage cable

“ To me, as a supervisor and a site safety guy, this tool is everything wrapped into one. **IT'S PRODUCTIVITY, IT'S SAFETY.** [...] the efficiency of the tool and safety of the tool out-weighs anything out there. ”

-Reggie F., 20+ years experience†

## OTHER WAYS TO STRIP CABLE



DWHT70794  
8" ANGLED  
DIAGONAL PLIERS



DWHT70798  
8" LINESMAN  
PLIERS



DWHT70800  
8" LONG NOSE  
PLIERS



DWHT70797  
9" LINESMAN  
PLIERS

† Testimonial provided in exchange for free product.

# REAL-TIME DIAGNOSTICS HELP INCREASE PRODUCTIVITY.

Our onboard diagnostics and Crimp Connect™ reporting make for some of the smartest Crimping tools on the market.



**20V**  
MAX\*  
LITHIUM ION

## DCE300 | 20V MAX\* DIED CABLE CRIMPING TOOL

Cable Capacity	#8 - 750 MCM CU/AL
Handle Configuration	Pistol Grip
Crimping Force	12 tons (110 KN)

- **COMPATIBLE WITH LEADING BRANDS U-TYPE DIES**
- **TOOL PRODUCES cULus CLASSIFIED CRIMPS** when used with U-Type dies and connectors described in the instruction manual
- **CRIMP CONNECT™ SYSTEM REPORTING TECHNOLOGY** provides detailed reports of work completed, ideal for documentation
- **ONBOARD DIAGNOSTICS** shows on/off, battery level, cycle completed, recalibration and service needed, and operating temperature range at-a-glance

### KIT OPTIONS



**DCE300M2**  
DCE300 Cable Crimping Tool, (2) DCB204 20V MAX\* XR® Premium Lithium Ion Batteries (4 Ah), Charger, Shoulder Strap, Micro USB Cable, Die Storage Box and Kit Box.

**20V**  
MAX\*  
LITHIUM ION

## DCE350 | 20V MAX\* DIELESS CABLE CRIMPING TOOL

Cable Capacity	#8 - 750 MCM CU/AL
Handle Configuration	Pistol Grip
Crimping Force	6 tons ( 55 KN)

- **TOOL HAS UNIVERSAL 4-PUSHER DESIGN AND CRIMPS #8 – 750 MCM Cu AND Al CABLE AND CONNECTORS**
- **CRIMP CONNECT™ SYSTEM REPORTING TECHNOLOGY** provides detailed reports of work completed, ideal for documentation
- **ONBOARD DIAGNOSTICS** shows on/off, battery level, cycle completed, recalibration and service needed, and operating temperature range at-a-glance

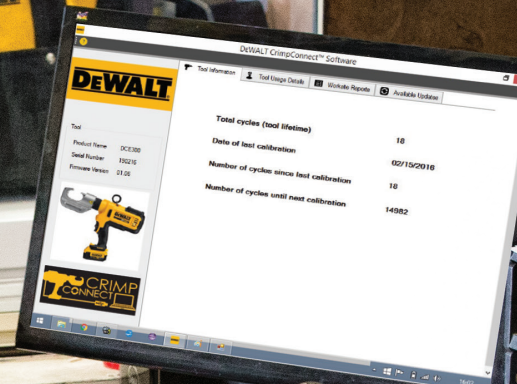
### KIT OPTIONS



**DCE350M2**  
DCE350 Cable Crimping Tool, (2) DCB204 20V MAX\* XR® Premium Lithium Ion Batteries (4 Ah), Charger, Shoulder Strap, Micro USB Cable, Kit Box and Storage Box.



## CRIMP. TRACK. REPORT.™



### INSTANT ONBOARD DIAGNOSTICS

Onboard diagnostics show tool performance on the job.

- Power On/Off
- See battery state of charge
- Know the cycle was successful
- Alerts when service or calibration is needed
- Notifies when outside of operating temperature range



### GET DETAILED REPORTS WHEN THE JOB IS DONE.

Crimp Connect™ Intelligence is integrated in our Crimping Tools. Download the software at [www.DEWALT.com/ELECTRICAL](http://www.DEWALT.com/ELECTRICAL) and hook your tool up using the included USB.

- Date, time and force of crimp
- Calibration dates
- Number of crimps on tool, crimps since last calibrated, and remaining crimps until next calibration
- Customize report with jobsite and user information

ACCESS THE SOFTWARE AT  
**WWW.DEWALT.COM/ELECTRICAL**

# DEWALT

# INNOVATION FOR THE TRADES™



[WWW.DEWALT.COM/ELECTRICAL](http://WWW.DEWALT.COM/ELECTRICAL)

TOOL WARRANTY		
<b>3</b> YEAR <small>LIMITED WARRANTY</small>	<b>1</b> YEAR <small>FREE SERVICE</small>	<b>90</b> DAY <small>SATISFACTION GUARANTEE</small>

BATTERY WARRANTY	
<b>3</b> YEAR <small>LIMITED WARRANTY</small>	<b>2</b> YEAR <small>FREE SERVICE</small>

DCB203

BATTERY WARRANTY	
<b>3</b> YEAR <small>LIMITED WARRANTY</small>	<b>3</b> YEAR <small>FREE SERVICE</small>

DCB204 & DCB205

DEALER STAMP

**1-800-4-DEWALT**  
**www.DEWALT.com**